



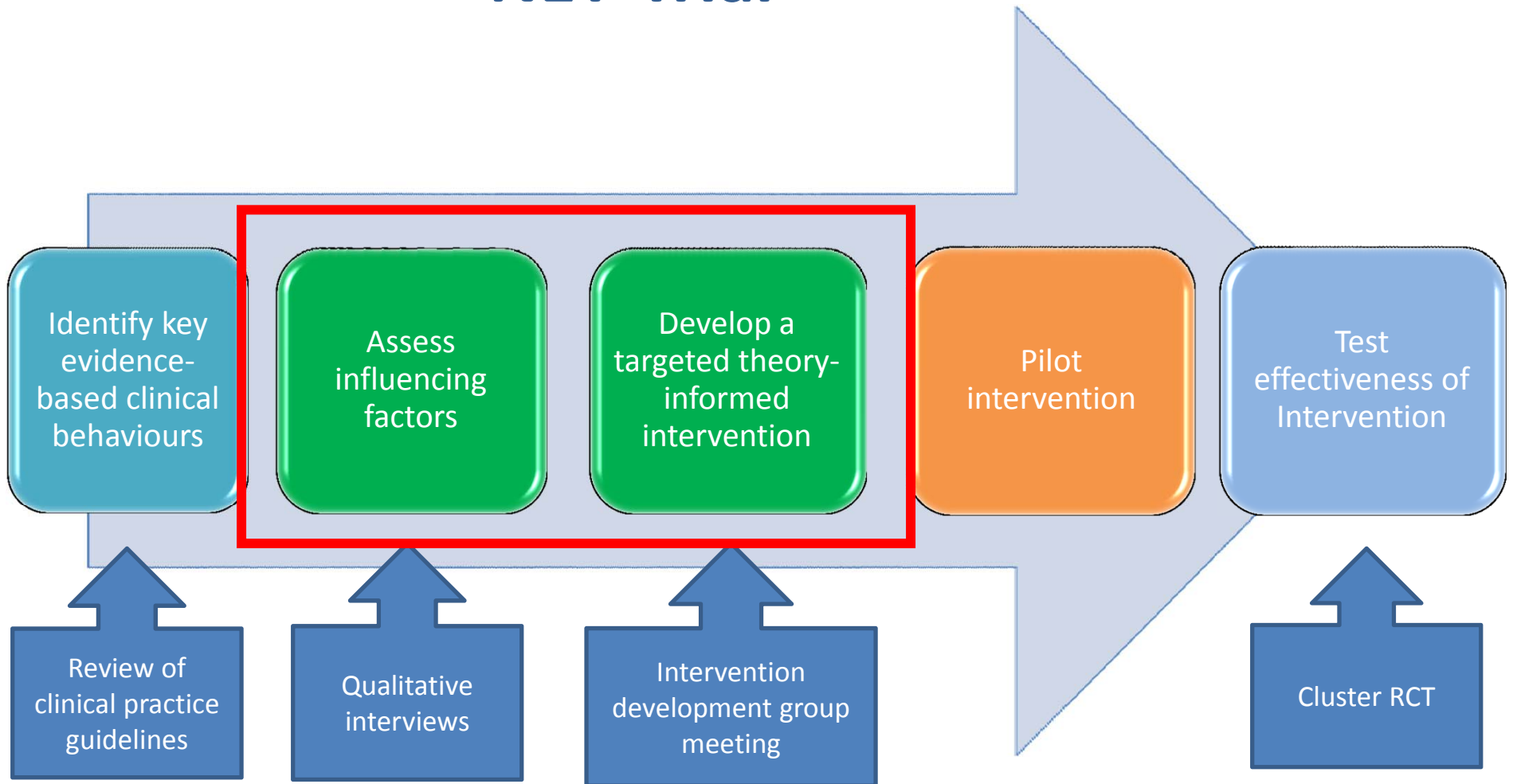
Understanding the factors influencing the management of patients with minor head injuries in the emergency department

A qualitative study to inform the development of an implementation intervention

Marije Bosch

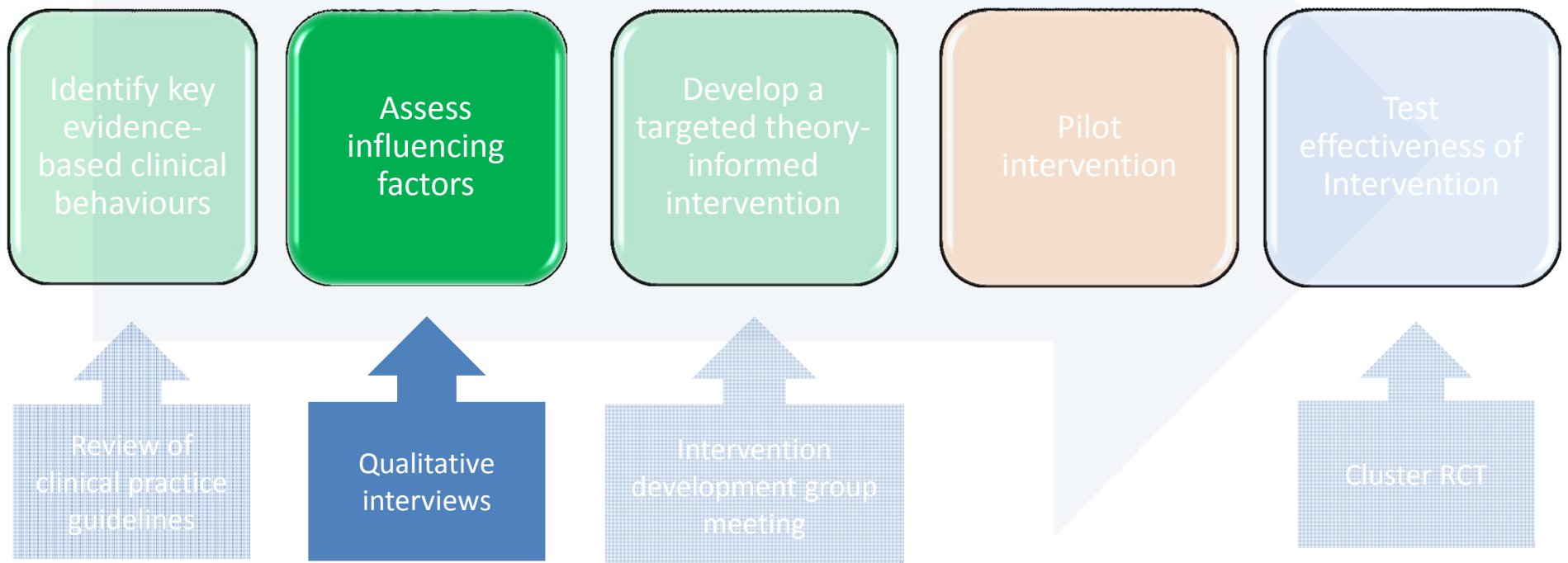
Emma Tavender, Denise O'Connor, Sue Brennan, Russell Gruen, Sally Green, Susan Michie, Jill Francis, Jonathan Knott
on behalf of the NET Study Team

NET-Trial



- 1) Green S, et al. Implement Sci 2012; 7(1)
- 2) Tavender E, et al. Acad Emerg Med 2011; 18(8):880-9
- 3) Bosch M, et al. J Eva Clin Prac 2012 Apr 9. doi: 10.1111/j.1365-2753.2012.01835.x. [Epub ahead of print]

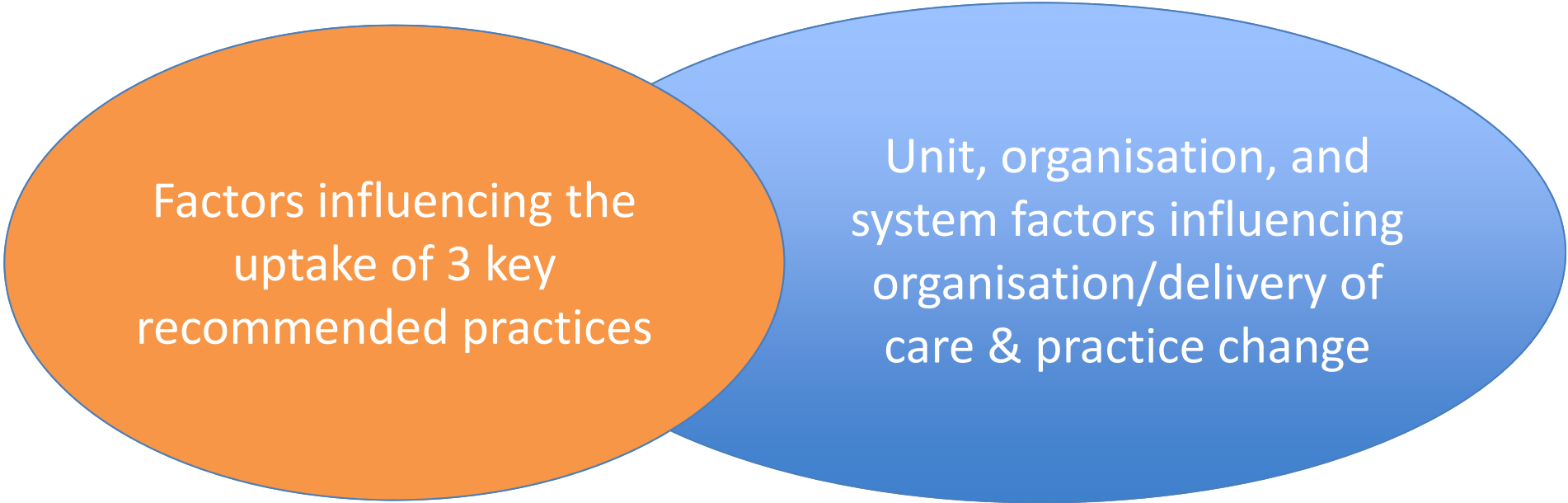
Assess influencing factors



Two frameworks

Theoretical Domains Framework

Conceptual model for spread and sustainability of innovations in organisations¹



Factors influencing the uptake of 3 key recommended practices

Unit, organisation, and system factors influencing organisation/delivery of care & practice change

1) Greenhalgh T, et al. Milbank Q 2004; 82(4).

Assess influencing factors - interviews

Methods

- Single in-depth semi-structured interviews
- Sampling frame: VIC 24-h EDs
- Purposeful sample
- Thematic / Saliency analysis
- 2 theoretical frameworks

Results - sample

- 13 hospitals
 - 8 major cities / 5 regional
- 42 respondents
 - 9 ED directors
 - 20 senior / 6 junior doctors
 - 3 senior / 10 junior nurses

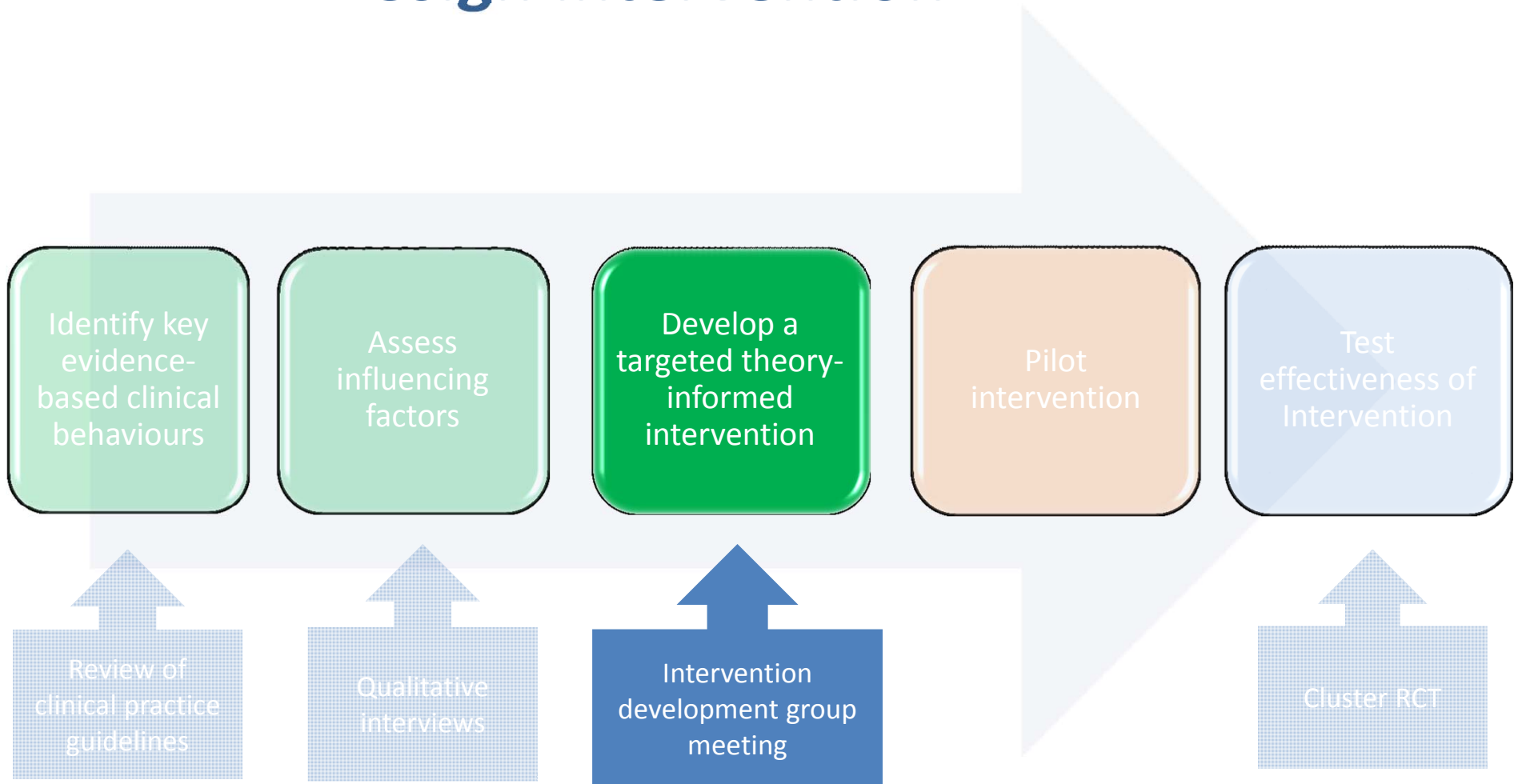
Interview results (PTA) framework 1

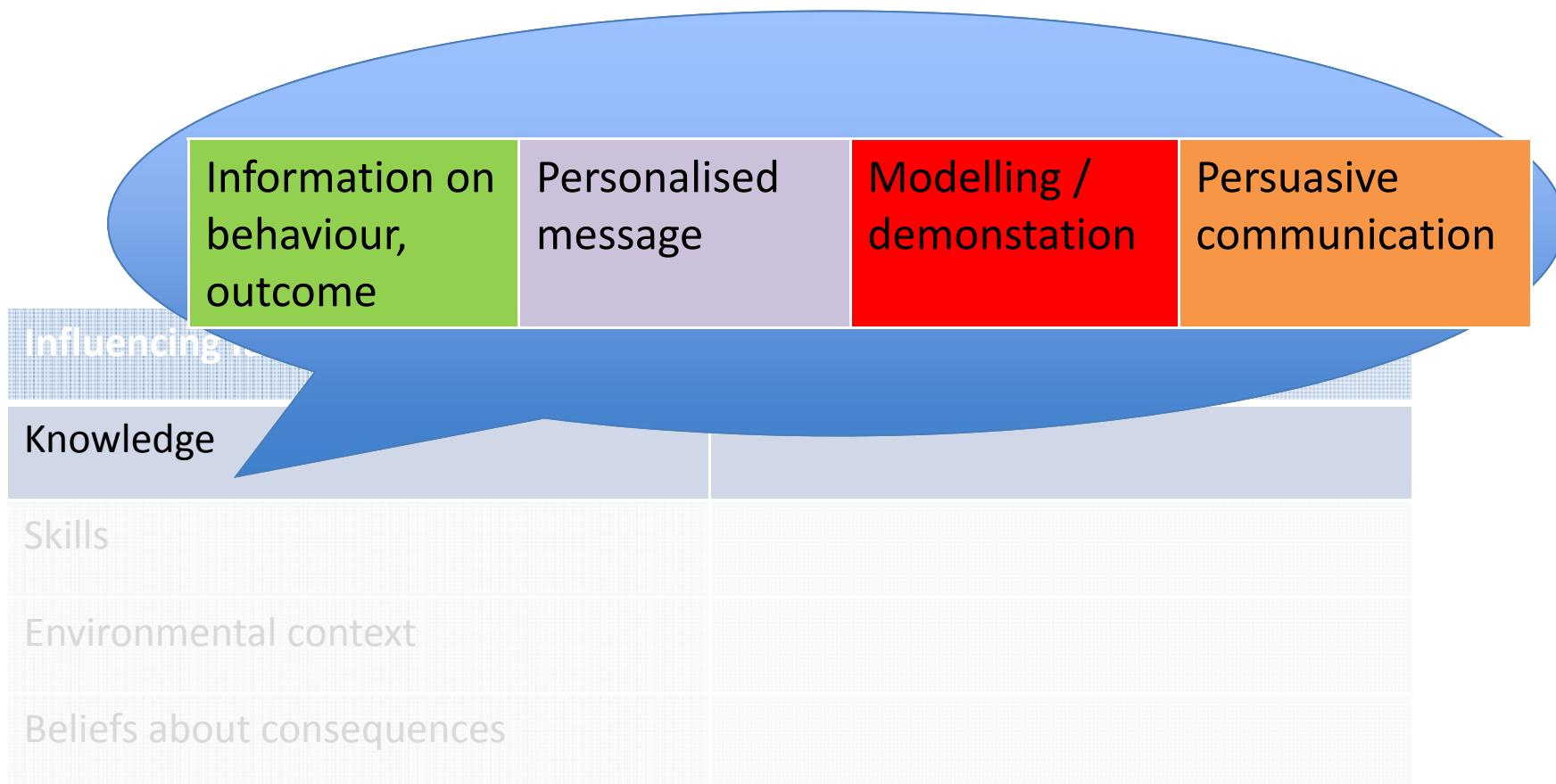
Domain	Factors
Knowledge	Lack of awareness tools
Skills	Lack of training
Environmental context / resources	Validated tool not available / no space in notes
Beliefs about consequences	Concerns around increased time for patient to spend in ED

Interview results framework 2

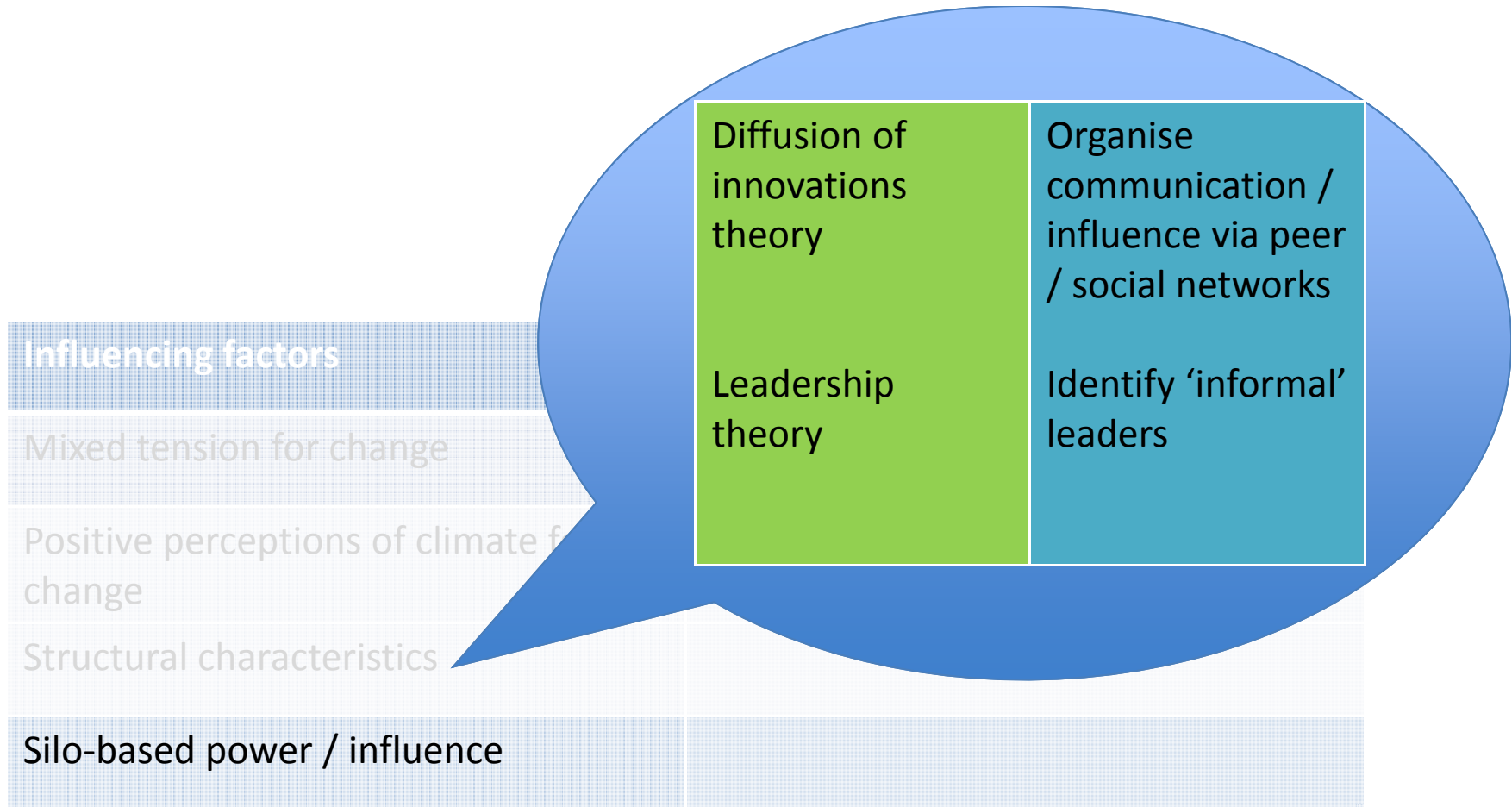
Domain / Theme	Factors
Process of implementation – Power and influence	Silo-based
System antecedents – Structural characteristics	Shift work, high turn-over rates
System antecedents – Receptivity context for change	Positive perceptions of ‘climate for change’
System readiness – Tension for change	Mixed tension for change – ↓ ‘acute’; ↑ ‘long-term’

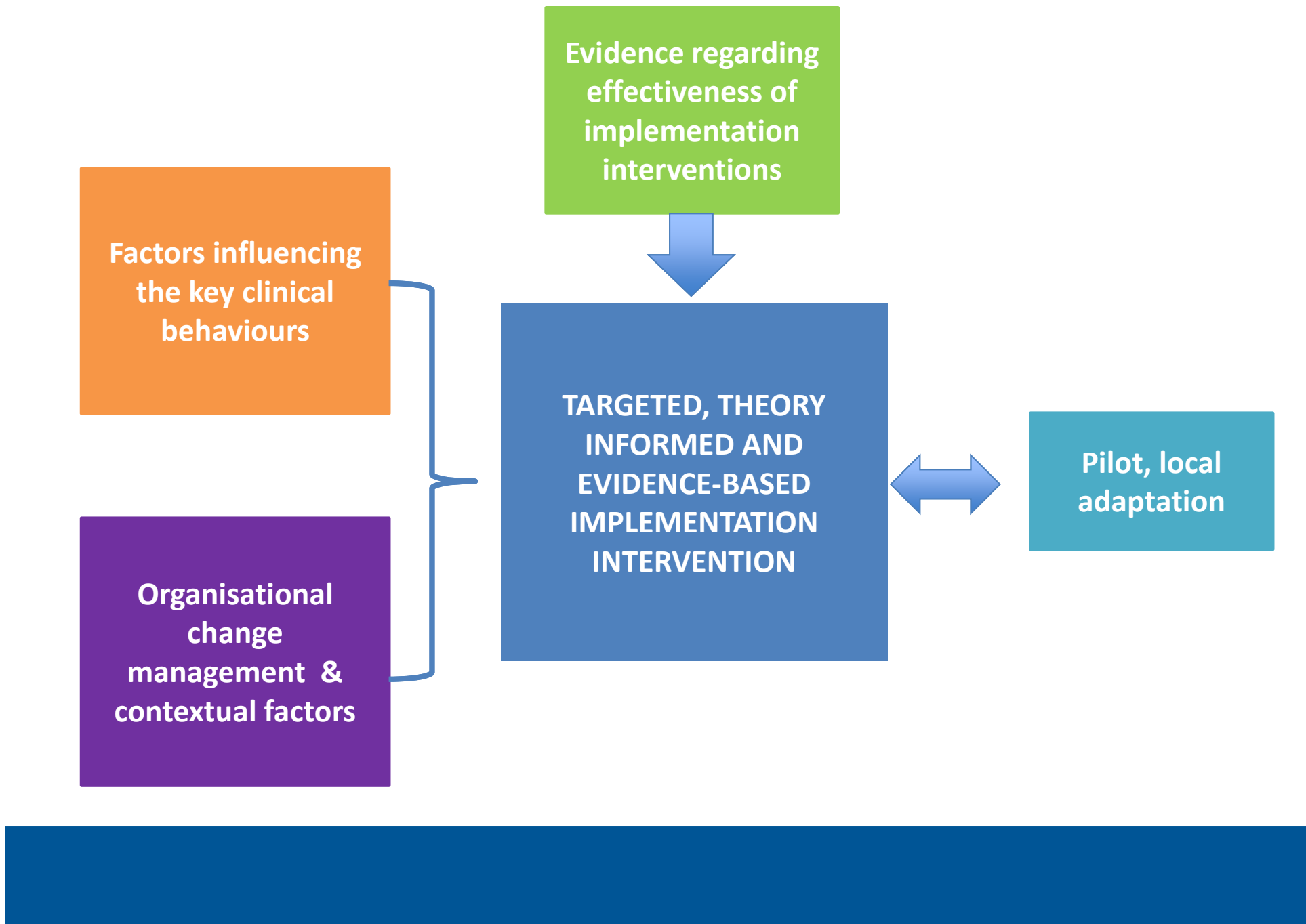
Design intervention





AGREED USE; DISAGREEMENT; AGREED NON-USE; UNCERTAIN





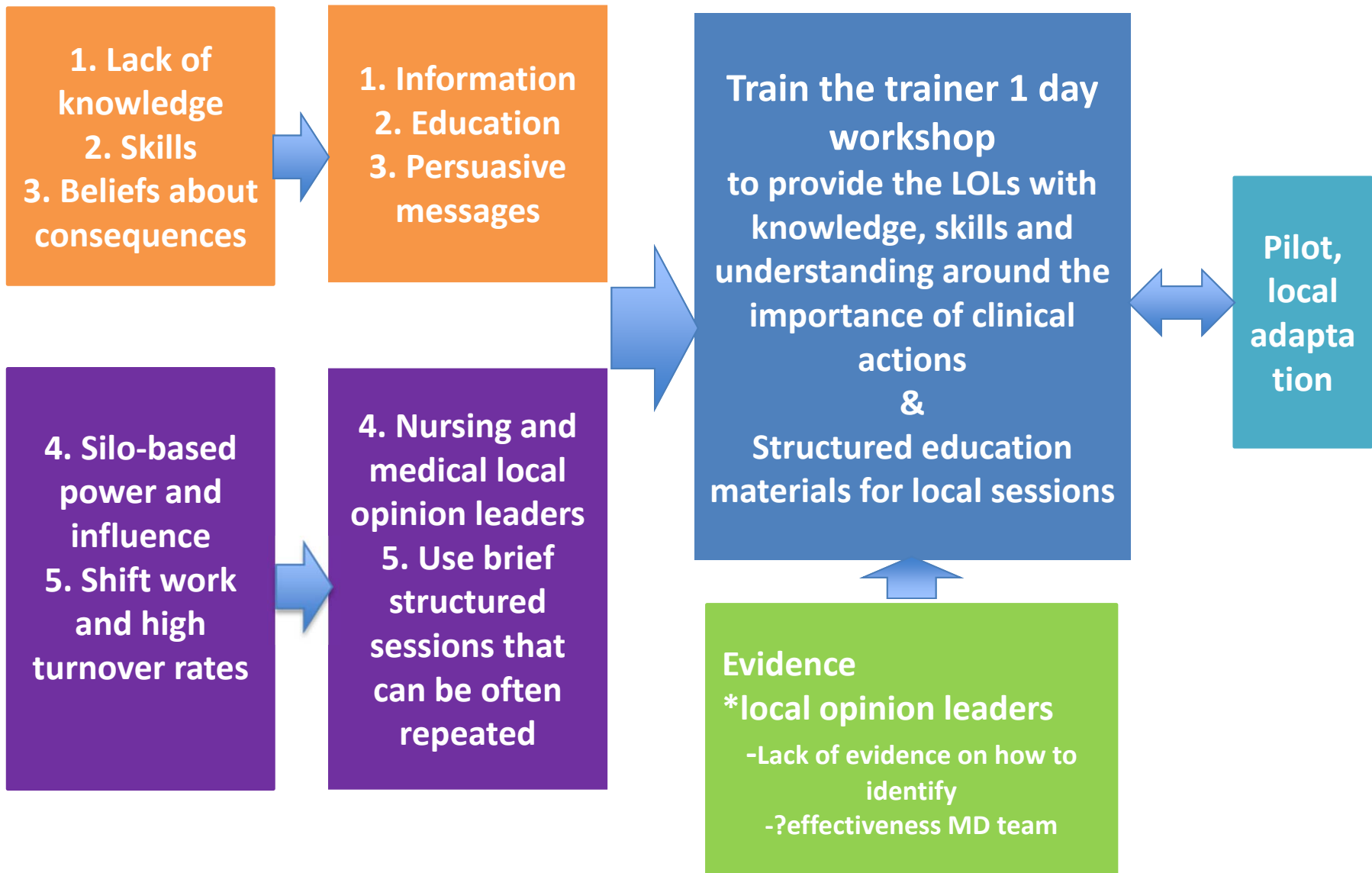
Evidence regarding effectiveness of implementation interventions

Factors influencing the key clinical behaviours

TARGETED, THEORY INFORMED AND EVIDENCE-BASED IMPLEMENTATION INTERVENTION

Organisational change management & contextual factors

Pilot, local adaptation



This project is proudly supported by:



Victorian neurotrauma initiatives
*Research programs of the
Transport Accident Commission*

www.tac.vic.gov.au

